

**5:30 pm Chippewa Lake Weed Control  
Annual Meeting, Adjourn by 6:15 pm**

**6:30 pm Chippewa Lake Weed Control  
Public Hearing**

*August 13, 2021*



A black and white photograph of a lake. In the foreground, the water is dark with some ripples. In the middle ground, a large, leafy tree stands on the shore, its reflection visible in the water. The background shows a hazy, overcast sky. The overall tone is somber and naturalistic.

# **Chippewa Lake Weed Control District Advisory Committee Report**

August 13, 2021



# **Agenda**

- **Team Introductions**
- **Review of Team Monitoring in 2020**
- **Working with CLMP in 2021**
- **Runaway Bogs**
- **Invasive Plant Watch**

# **Committee Members**

## **Chippewa Lake Weed Advisory Committee**

- **Bryan Roels**
- **Paul Phillips**
- **Mark Coscarelli**

# **2020 Team Monitoring Summary**

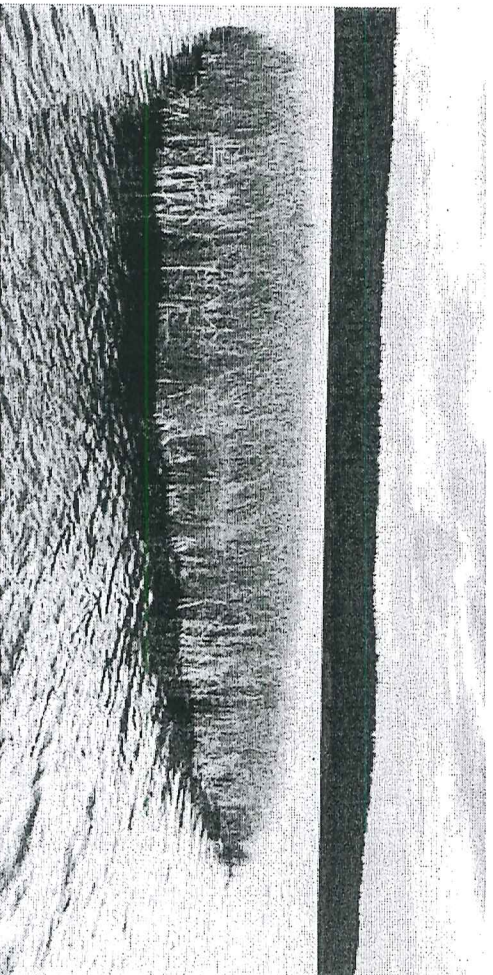
- **2020 State budget cuts shut down all funding for Cooperative Lake Monitoring Program (CLMP)**
- **Testing supplies were unavailable**
- **CLMP is back in business for 2021 and has been funded for the next 5 years**
- **During 2020, we did continue to work closely with PLM**

# **MICORPS Website**

- <https://micorps.net/lake-monitoring/individual-lake-reports/>

# Runaway Bogs

- This summer brought us a new challenge, runaway bogs.
  - What is a bog?
    - The bogs that we had break loose are all vegetative material (very little soil).
    - The bogs are not reliant on a root system that attach to the bottom





# Runaway Bogs

- This summer we have had 3 bogs break loose from the west side of the lake.
- The wind carried them to different areas of the lake
  - A **BIG THANK YOU** to Bob & Sue Smith and 14 of their neighbors removed one of them.
  - Another (very large) was removed at the Cemetery Point Park using a lake weed harvester, excavator and dump truck paid for through weed control dollars.
  - A third (smaller) remains at the Mitchel Landing Park and will be removed by the Township.

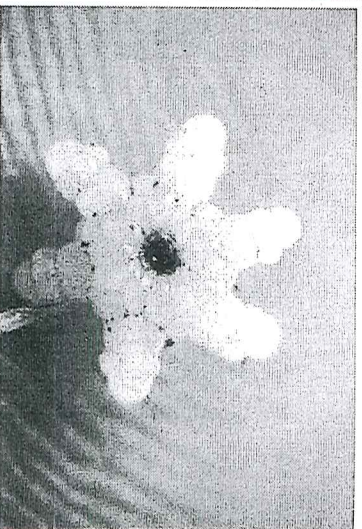
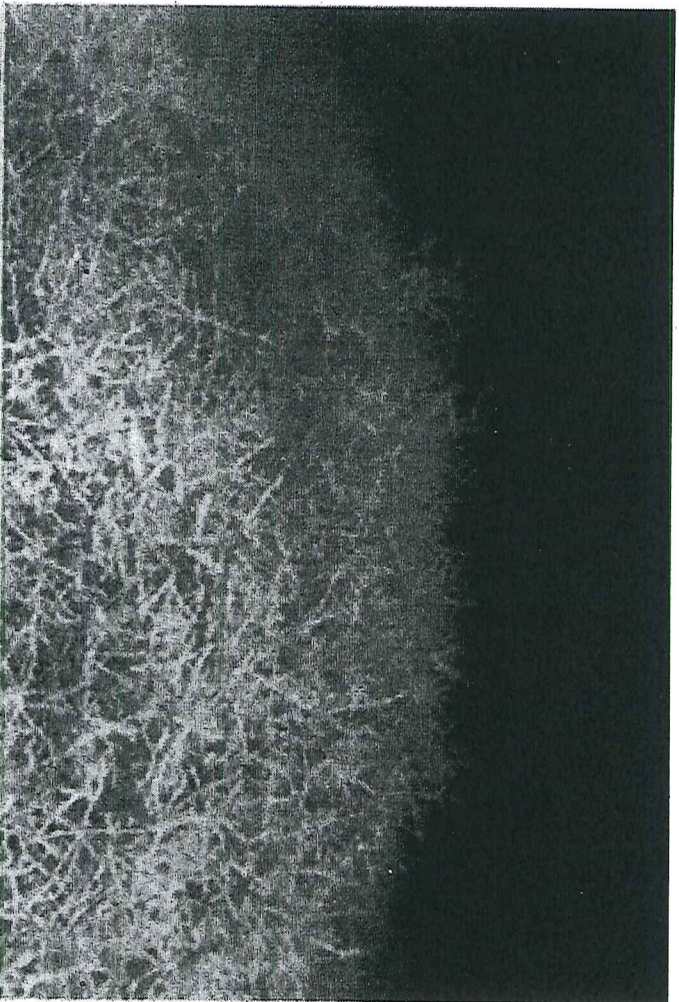


# Runaway Bogs

- What causes bogs to break away?
  - We don't know for sure.
    - Lilly pad root system, higher than normal water level, high winds, above average boat traffic all could have contributed.
  - Will we continue to have loose bogs?
    - We don't know.
    - It doesn't appear that anymore are currently breaking loose.
    - Long term residents claim it hasn't happened in at least 40 years.

# Continued Monitoring for Starry Stonewort

Found in Chippewa Lake on two separate occurrences. Both times it was found and treated early. We continue to monitor closely.





# **Moving Forward**

- **Volunteers continue testing in Chippewa Lake and work through CLMP.**
- **Continue to monitor for Starry Stonewort and other new invasive weeds.**
- **Continue to work with PLM**