



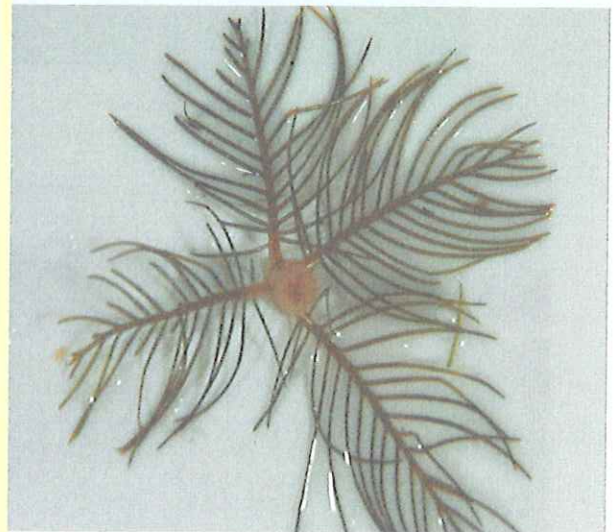
## *Myriophyllum spicatum* - Eurasian Watermilfoil

### Facts on Eurasian Watermilfoil (EWM)....

- Introduced in the United States in 1880 (Reed, 1997)
- EWM causes significant decline in native aquatic vegetation (Madsen et al., 1991)
- EWM reduces the amount of light that would otherwise reach favorable lower-growing aquatic plants (Aiken et al., 1979)
- EWM decreases biodiversity of macroinvertebrates which are critical for a healthy fishery (Newroth, 1985)
- EWM closely resembles many native species of Watermilfoil; however, they will random grow in a canopy formation
- Millions of dollars are spent annually on Michigan inland lakes to control EWM (MDNRE website, 2008)

### Places EWM may be found...

- Lakes
- Streams
- Rivers
- Ponds
- Reservoirs
- Drains
- Ditches
- Seasonal ponds
- Detention basins
- Bays
- Great Lakes



EWM typically has between 12-16 pairs of leaflets on each leaf within a whorl. Native Watermilfoil usually has less than or equal to 12.



## Literature Cited

- Aiken, S.G., P.R. Newroth, and I. Wile. 1979. The biology of Canadian weeds. 34. *Myriophyllum spicatum* L. *Can. J. Plant Sci.* 59: 201-215.
- Madsen, J.D., J.W. Sutherland, J.A. Bloomfield, L.W. Eichler, and C.W. Boylen. 1991. The decline of native vegetation under dense Eurasian watermilfoil canopies, *Journal of Aquatic Plant Management* 29, 94-99.
- Newroth, P.R. 1985. A review of Eurasian watermilfoil impacts and management in British Columbia. Pp. 139-153. In: Proc. First Int. Symp. On watermilfoil (*M. spicatum*) and related Haloragaceae species. July 23-24, 1985. Vancouver, BC, Canada. Aquatic Plant Management Society, Inc.
- Reed, C.G. 1977. History and disturbance of Eurasian milfoil in the United States and Canada. *Phytologia* 36: 417-436.



### ***Educate Yourself.....***

***Keep our waters free of EWM, visit the Michigan Sea Grant website for more info on how you can avoid the transfer of the plant to lakes via watercraft.***

**A canopy formed by EWM on Round Lake, Mason County, 2006**



Keep Posted for More Additions to Lakeshore's New Science Database for Water Resource and Inland Lake Management at:

[www.lakeshoreenvironmental.com](http://www.lakeshoreenvironmental.com)